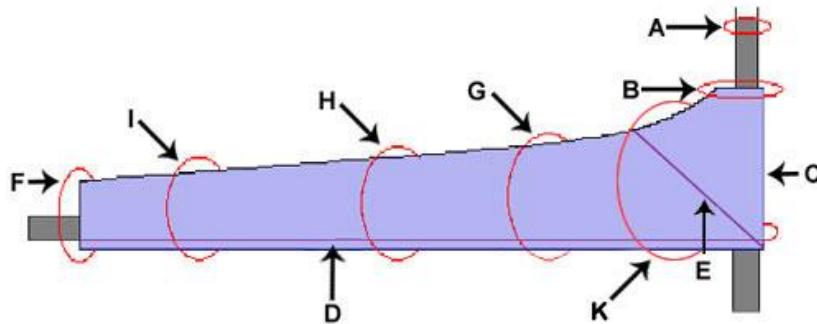




1890 Whitaker St.
 White Bear Lake, MN 55110
 Phone: 651.251.5494
 www.SailLaVieUsa.com

Name _____ Telephone _____
 Address _____ Fax _____
 City _____ State _____ Zip _____ Email _____
 Fabric Color _____

How to measure for your mainsail cover:



- A= Circumference of Mast including halyards and winches you want inside the cover
- B= Circumference Mast and Headboard
- C= Height of Sacked Sail
- D= Length of mast from front of mast to end of boom
- E= 45 deg. Measurement from gooseneck
- F= Circumference at Clew including Clew Car if present
- G= Circumference of Sail at 1/4 distance from mast
- H= Circumference of Sail at 1/2 distance from mast
- I= Circumference of Sail at 3/4 distance from mast
- J= Please provide locations of Vang and Sheet so we will not put any fasteners in these locations. Measure these from forward centerline of mast aft.
- K= Circumference from the boom around the headboard

Note: We prefer measurements G, H, and I to be measured every 3 feet for a better fit. If your boom is over 12 feet this may add extra measurements than what is shown on the picture.